

33

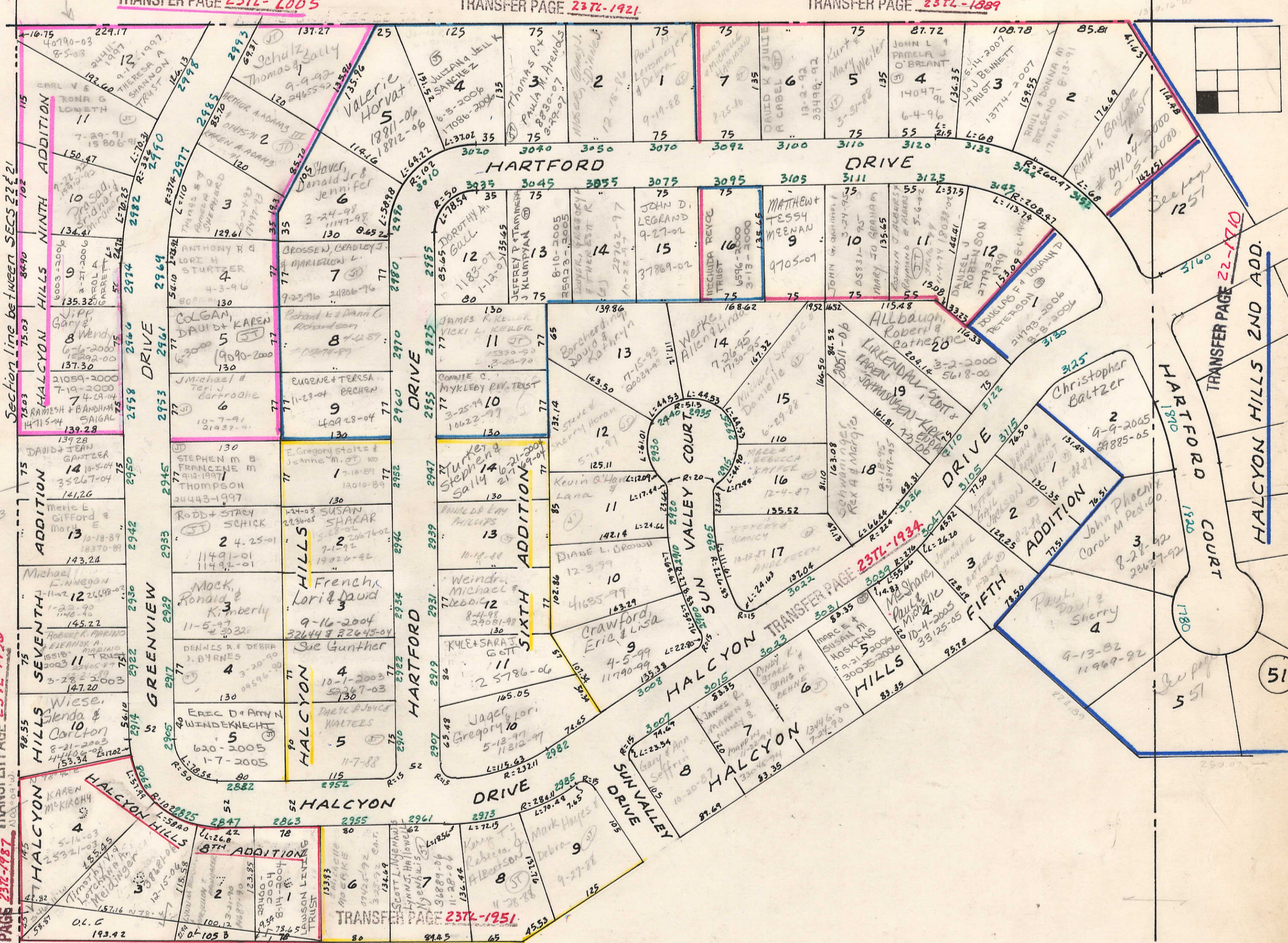
HALCYON HILLS 4TH ADD.

HALCYON HILLS 3RD ADD.

TRANSFER PAGE 237L-2005

TRANSFER PAGE 237L-1921

TRANSFER PAGE 257L-1889



Blanks to Lynn Hawbaker 9-21-89 #10296-29

Hermitage Homes, Inc. 5-14-80

SEC 21

55

TRANSFER PAGE 237L-1956
TRANSFER PAGE 237L-1987

21 22
28 27

Plat of Survey for Eldon Gnes 12-17-87

CITY OF BETTENDORF
8-10-90
#14809-90

Section line between SECS 22 & 27

VOL F

1